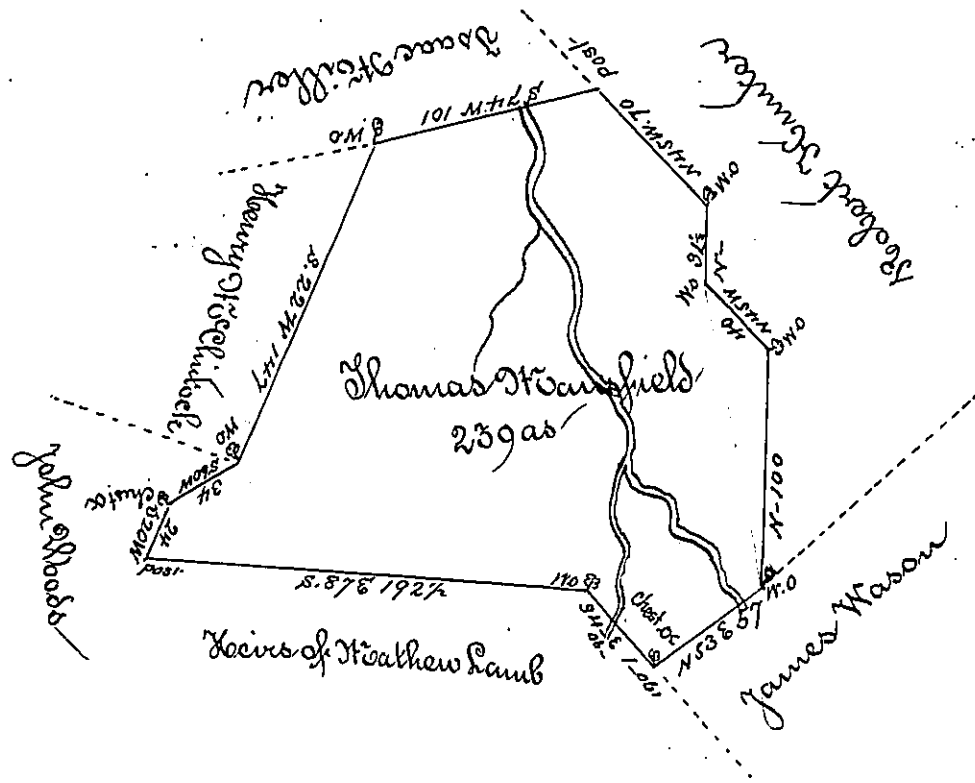


36



A Draught of a Tract of $\frac{1}{2}$ situate in Huntingdon Townsh^{ip} Westmoreland County containing Two Hundred and Thirty Nine Acres and an allowance of Six per Cent. Surveyed on the Eight Day of May 1786 in Pursuance of a Warrant Granted Thomas Hensfield Bearing Date March 11th 1786.

To John Lukens Esq^r }
 Surveyor General }

J^r. Henderson W. S.

IN TESTIMONY that the above is a copy of the original remaining on file in the Department of Internal Affairs of Pennsylvania, made conformably to an Act of Assembly approved the 16th day of February, 1833. I have hereunto set my Hand and caused the Seal of said Department to be affixed at Harrisburg, this first _____ day of _____ September _____ 1896.

James W. Patton
 Secretary of Internal Affairs.